

AUT 30m Radio Telescope

Converting from a communication
antenna to a Radio Telescope
antenna



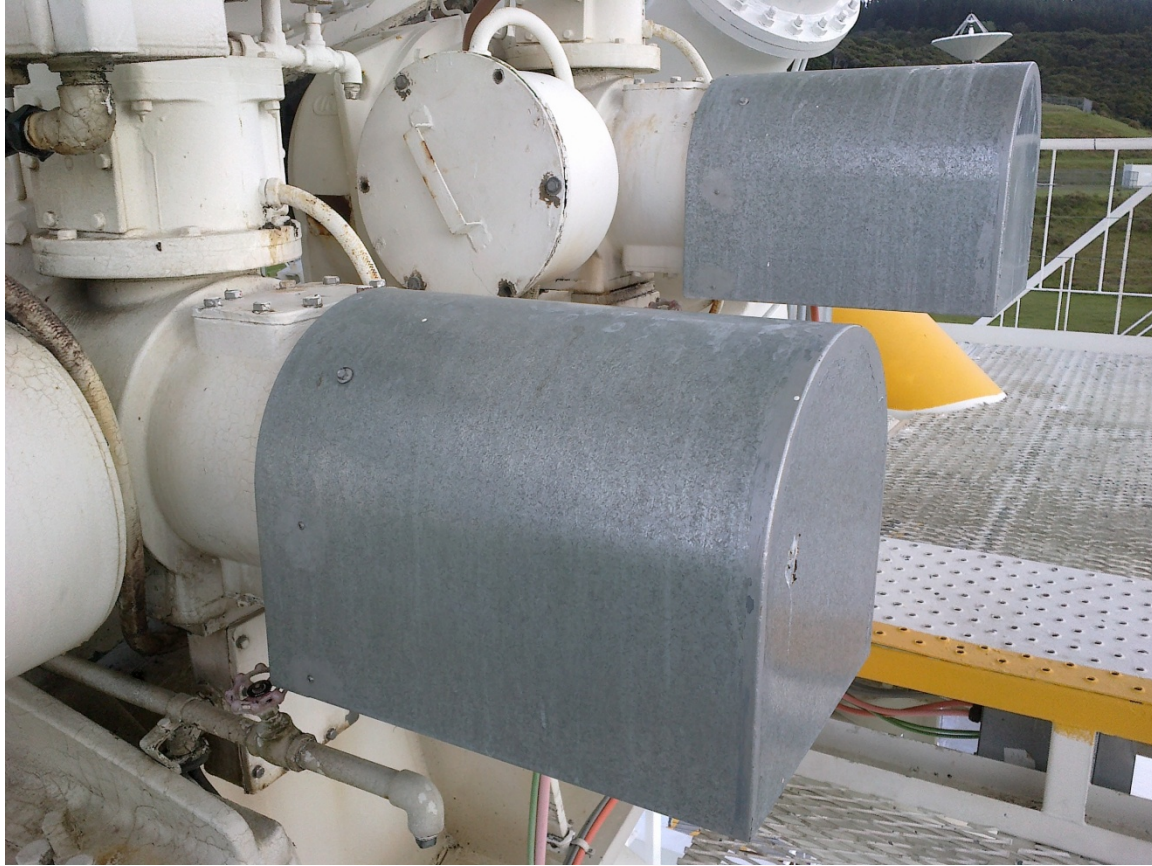
Azimuth motor drive assembly – April 2009



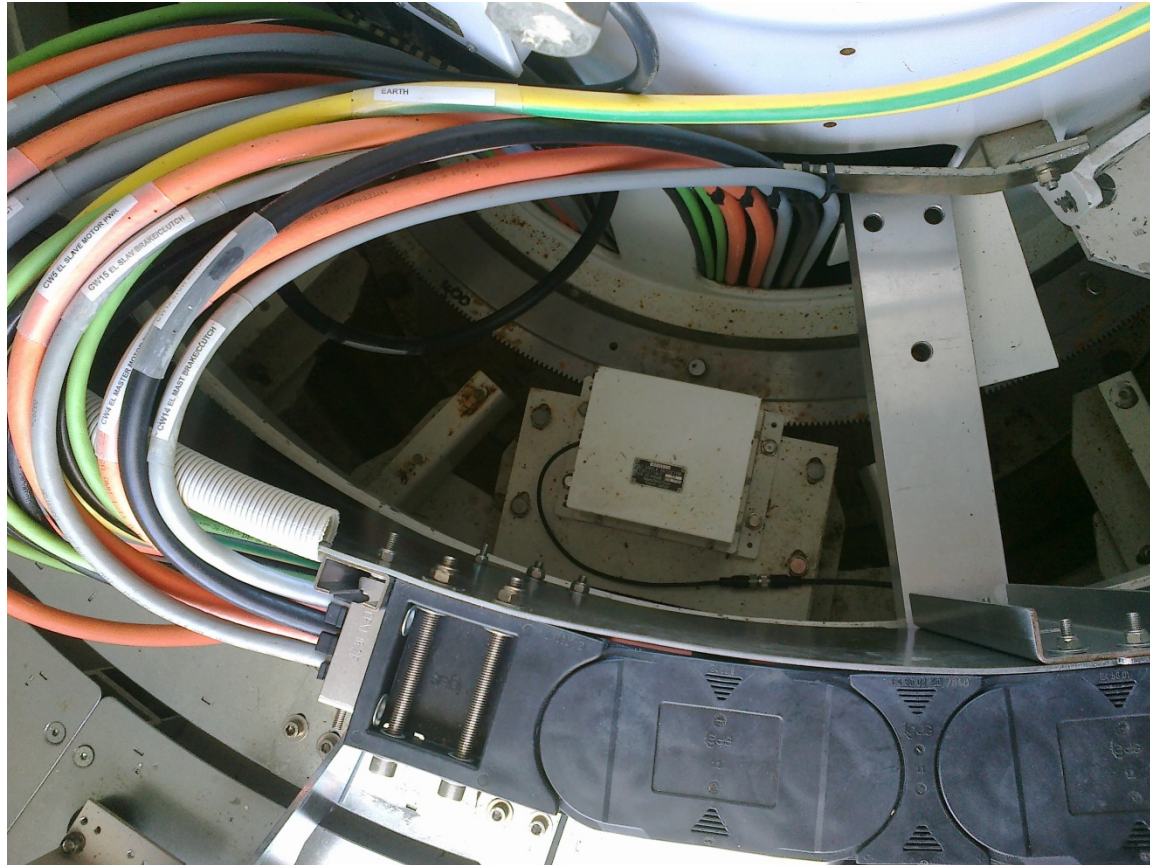
Azimuth motor assembly - now



Elevation motor assembly – April 2009



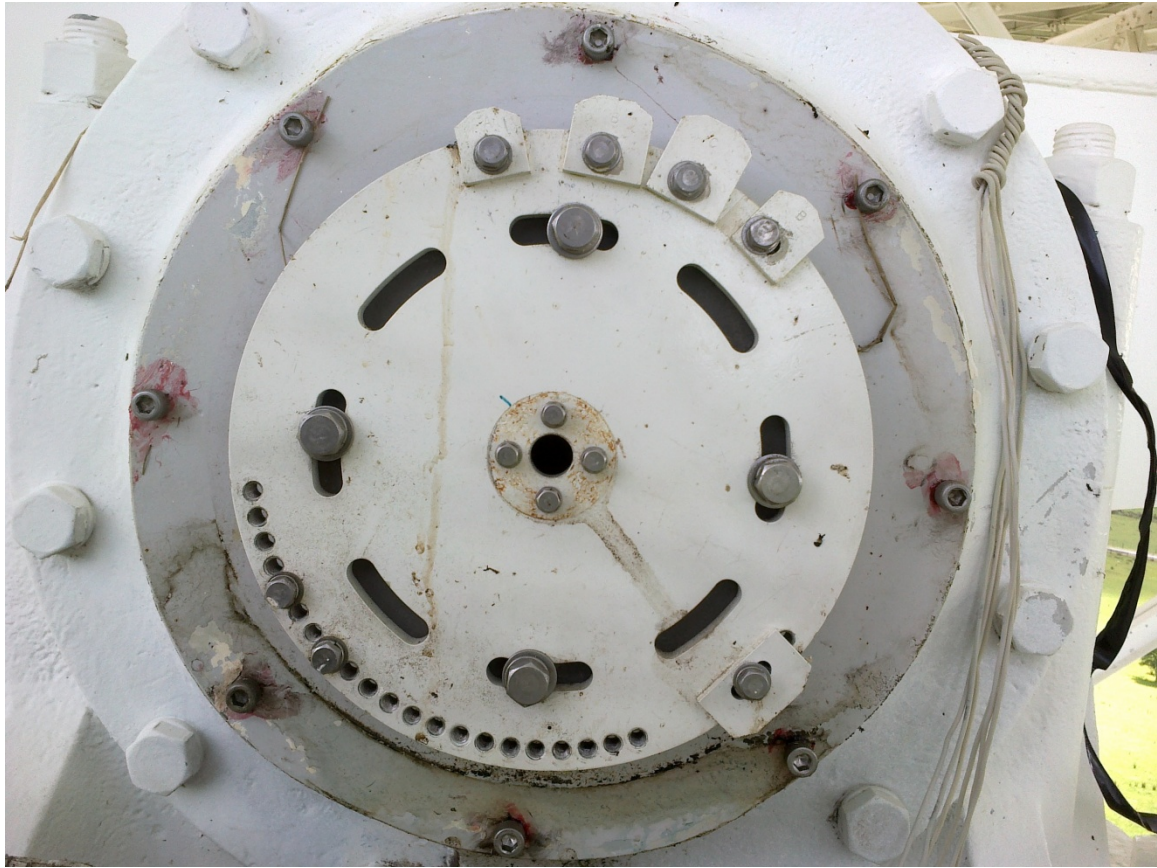
Elevation motor assembly - now



Azimuth position encoder box



**Azimuth CW limit switch, striker plate & hard stop rope
October 2012**



Elevation limit switch actuator – December 2012



**Elevation
motor, stow-pin, position encoder & limit switch cables
July 2013**



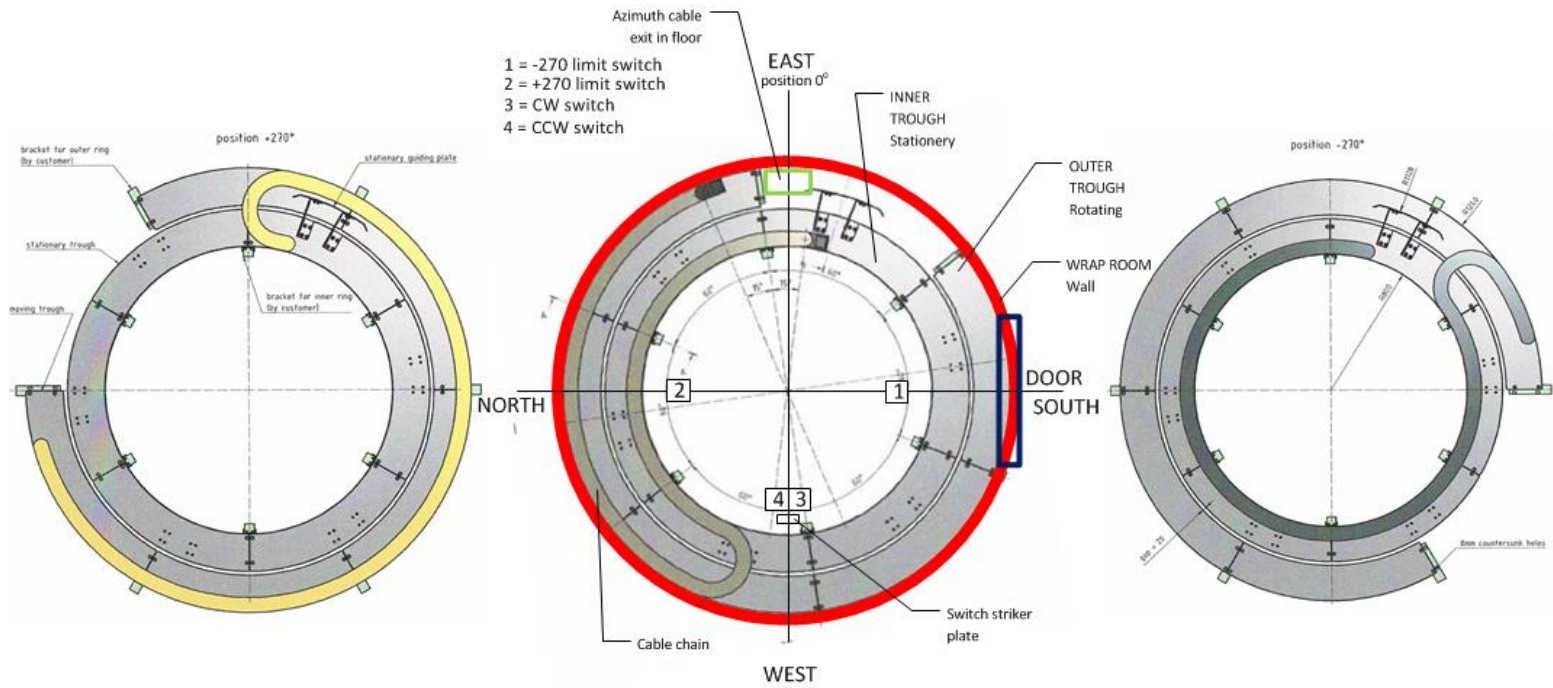
Azimuth hard stop switch assembly



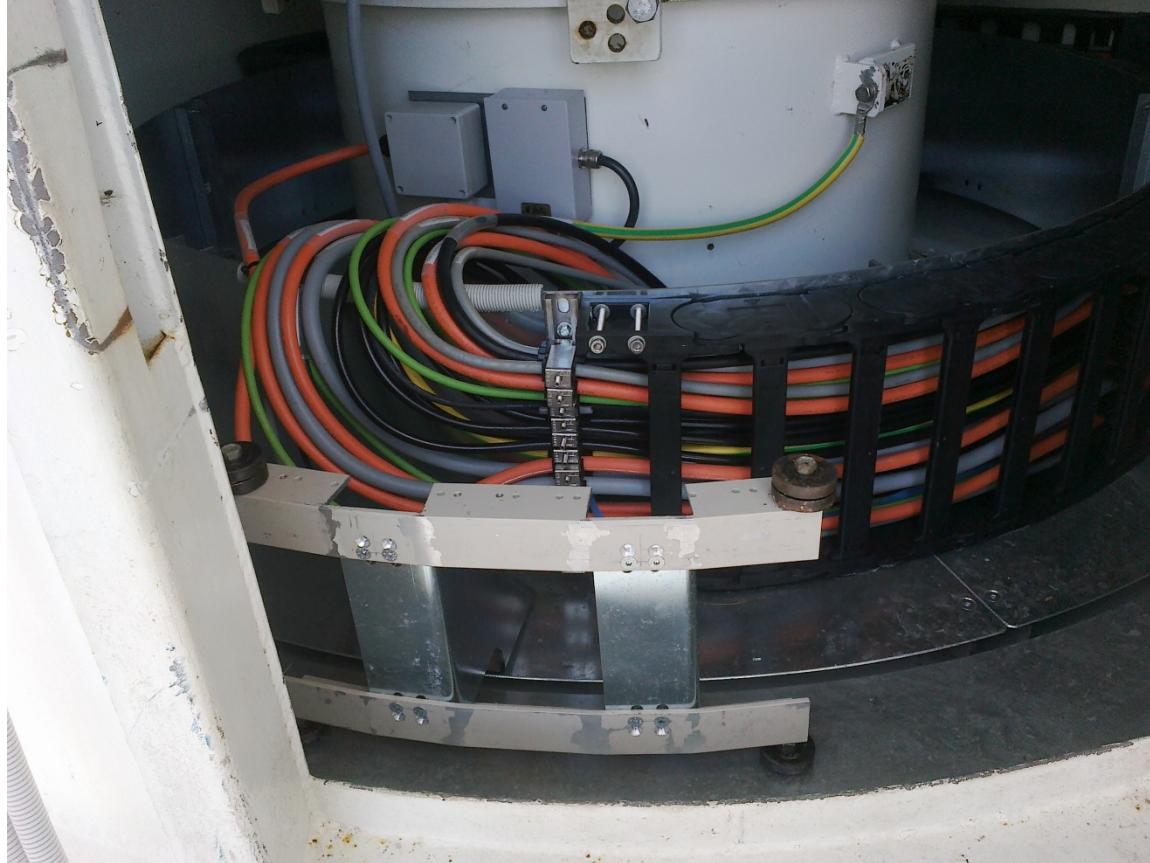
Azimuth hard stop weight



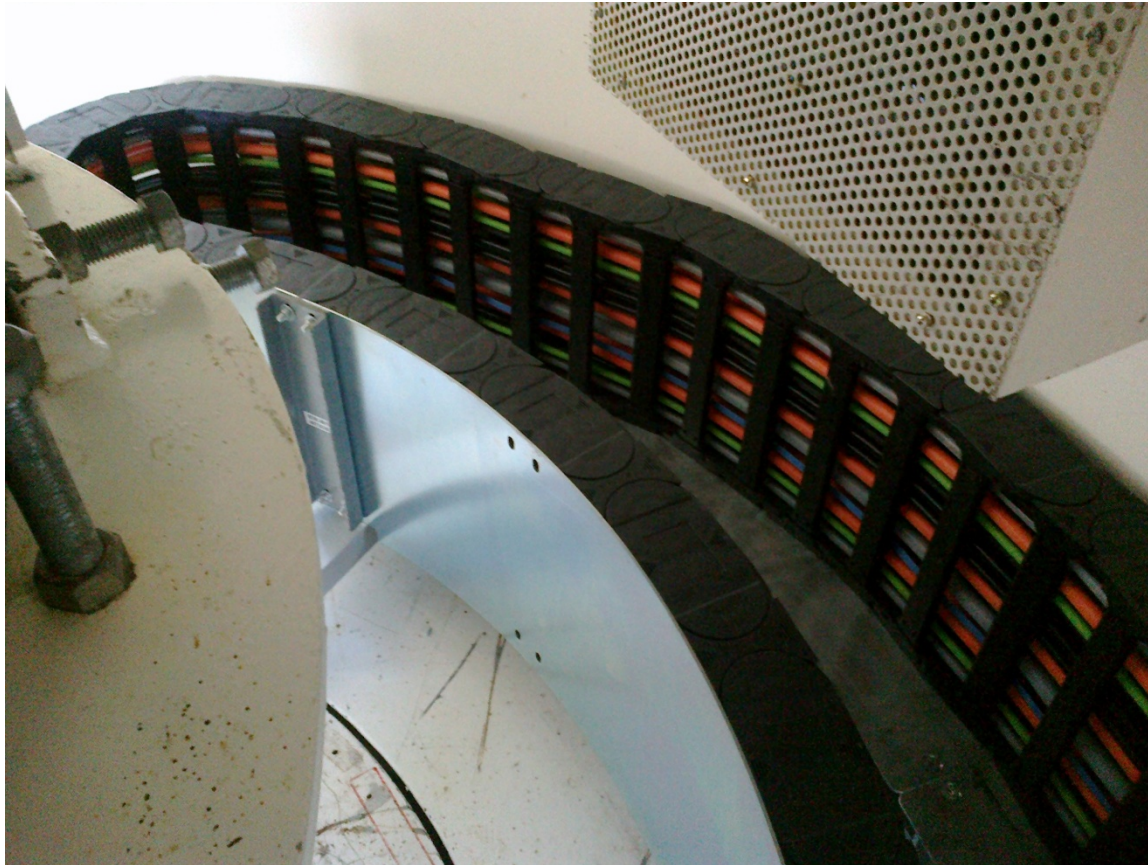
Azimuth direction switches



Cable Wrap orientation



Cable Wrap – fixed end



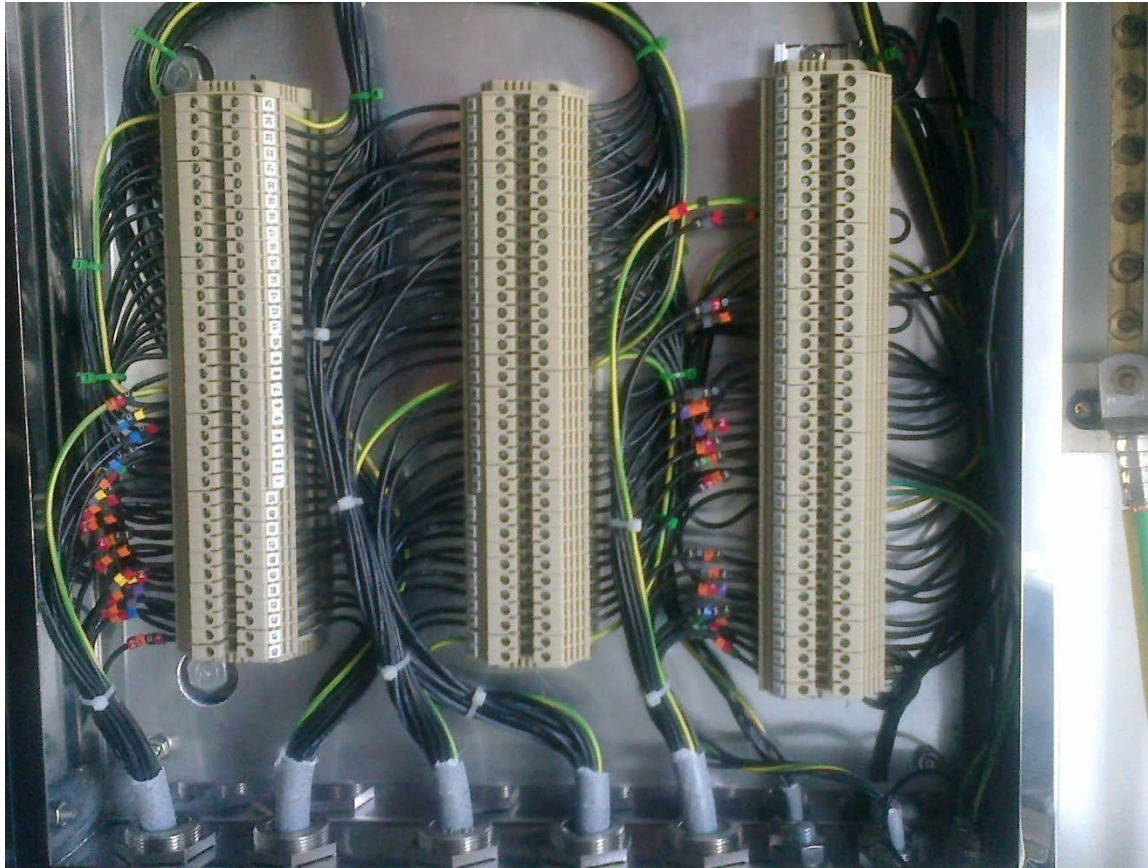
Cable Wrap in tray



Cable Wrap – moving end



Azimuth limit switches distribution box



Wrap control & signal cable distribution



Chief Overseer - Sergei