



**MINISTRY OF BUSINESS,  
INNOVATION & EMPLOYMENT**  
HIKINA WHAKATUTUKI

---

# New Zealand's Participation in the Square Kilometre Array Project

---

Dr Kjesten Wiig

National Manager Commercialisation

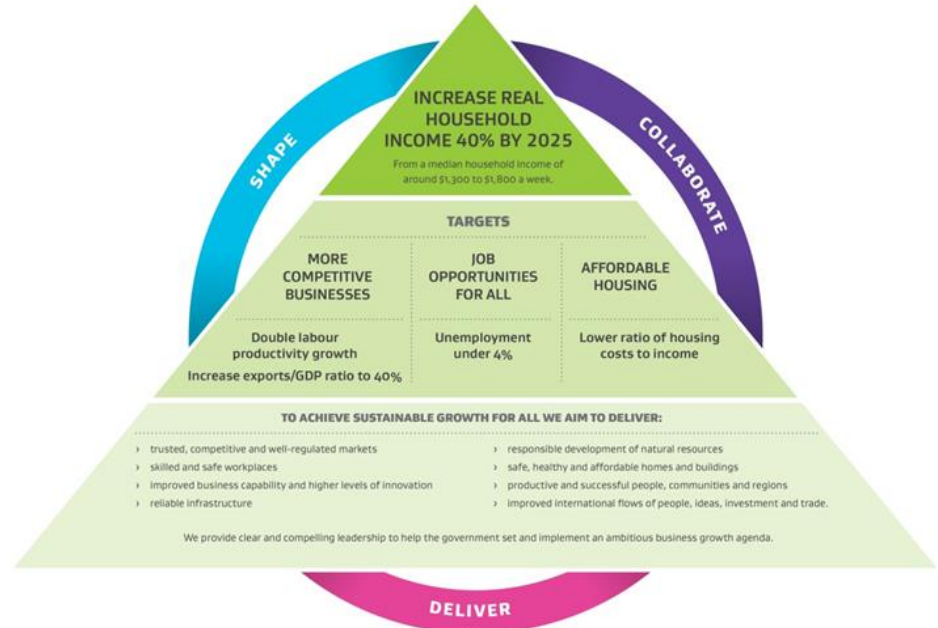


# MBIE's Vision

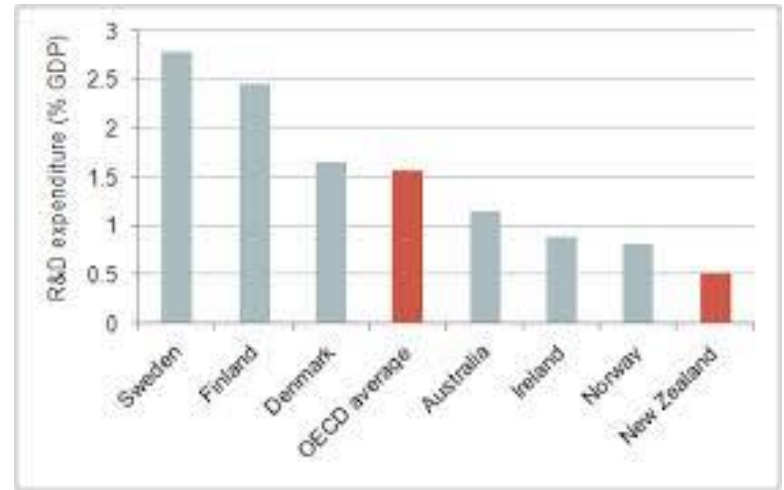
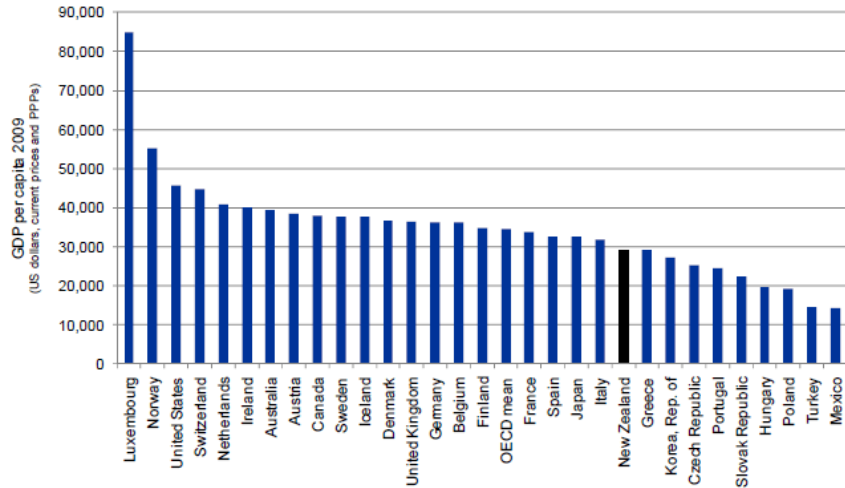
## Grow NZ for all

### New Zealand by 2025...

We want New Zealand to have **more productive and competitive firms exporting knowledge-intensive goods**, low unemployment, more affordable housing and innovative cities.



# New Zealand Lags Behind Other Highly Innovative Countries

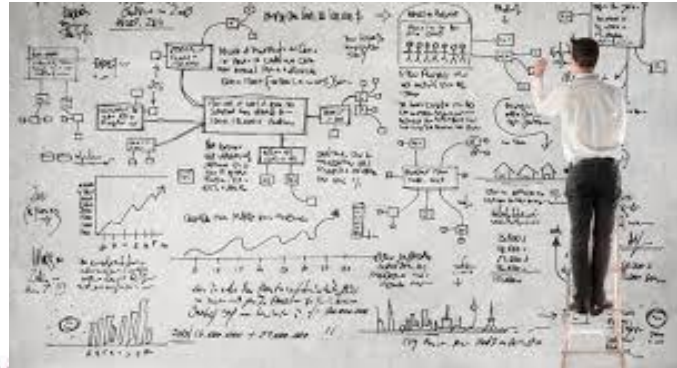


# Skilled People and Innovative Firms are Key

Skilled people and innovative firms are the engines of economic growth. They offer the greatest scope for changes in interventions to *Grow New Zealand for All*.



Outside the  
box **thinking**



# Thinking Outside of the Box – SKA Project



- One of the most visionary and ambitious scientific projects of the 21<sup>st</sup> century
- Will be the largest scientific instrument on Earth, both in terms of the physical scale and in terms of the data it will generate



# Why has New Zealand Invested in the Project?



- Potential for economic growth as a result of developing revolutionary new technologies
- International reputation and collaborations
- Research institution/industry relationships and collaboration



# What Does the MBIE Investment Look Like?



- \$1.7 million for work packages for pre-construction phase
- Governance - Vice Chair of the SKA Board of Directors
- International relationships



---

# Future Investment Would Depend On...

- Continued priority for ground-breaking science for the SKA project
- Potential for economic growth for New Zealand





---

# What's Needed to Build a Case for Future Investment?

- Outstanding work delivered for CSP and SDP work packages
- Identification of business opportunities for New Zealand
- Collaboration between all the key players



---

**THANK YOU!!**